

## Instructions for Use

# Interleukin-17 A (human) ELISA

**RUO**

**REF** EIA-4840



**96**



**DRG Instruments GmbH**, Germany  
Frauenbergstraße 18, 35039 Marburg  
Phone: +49 (0)6421-1700 0, Fax: +49 (0)6421-1700 50  
Website: [www.drg-diagnostics.de](http://www.drg-diagnostics.de)  
E-mail: [drg@drg-diagnostics.de](mailto:drg@drg-diagnostics.de)

**Distributed by:**



**DRG International, Inc.**, USA  
841 Mountain Ave., Springfield, NJ 07081  
Phone: (973) 564-7555, Fax: (973) 564-7556  
Website: [www.drg-international.com](http://www.drg-international.com)  
E-mail: [corp@drg-international.com](mailto:corp@drg-international.com)

**Please use only the valid version of the Instructions for Use provided with the kit.**  
**Verwenden Sie nur die jeweils gültige, im Testkit enthaltene, Gebrauchsanweisung.**  
**Si prega di usare la versione valida delle istruzioni per l'uso a disposizione con il kit.**  
**Por favor, use sólo la versión válida de las instrucciones de uso que se suministran con el kit.**  
**Utilisez seulement la version valide des Instructions d'utilisation fournies avec le kit.**  
**Utilize apenas a versão válida das Instruções de Utilização fornecidas com o kit.**

Introduced modifications / Durchgeführte Änderungen / Modifiche introdotte / Modificaciones introducidas / Modifications apportées / Modificações introduzidas	
<p>The following changes have been made in comparison to the previous version:          Im Vergleich zur Vorgängerversion wurden folgende Änderungen vorgenommen:          Rispetto alla versione precedente, sono state apportate le seguenti modifiche:          Se han introducido los siguientes cambios en comparación con la versión anterior:          Les modifications suivantes ont été apportées par rapport à la version précédente :          Foram efetuadas as seguintes alterações em comparação com a versão anterior:</p>	
9.6 Controls and 14.6 Controls	<p>Fixed reconstitution volume deleted.          Reconstitution volume is stated on the label of the control vial.</p>

### Table of Contents

1	PRODUCT DESCRIPTION .....	2
2	SUMMARY .....	2
3	PRINCIPLES OF THE TEST .....	2
4	REAGENTS PROVIDED .....	3
5	STORAGE INSTRUCTIONS – ELISA KIT .....	3
6	SAMPLE COLLECTION AND STORAGE INSTRUCTIONS .....	3
7	MATERIALS REQUIRED BUT NOT PROVIDED .....	3
8	PRECAUTIONS FOR USE .....	4
9	PREPARATION OF REAGENTS .....	4
10	TEST PROTOCOL .....	6
11	CALCULATION OF RESULTS .....	8
12	LIMITATIONS .....	9
13	PERFORMANCE CHARACTERISTICS .....	10
14	REAGENT PREPARATION SUMMARY .....	12
15	TEST PROTOCOL SUMMARY .....	13
	SYMBOLS USED .....	14

## 1 PRODUCT DESCRIPTION

The Interleukin-17A (human) ELISA Kit is an enzyme-linked immunosorbent assay for the quantitative detection of human IL-17A.

**For Research Use Only. Not for use in diagnostic procedures.**

## 2 SUMMARY

A new family of cytokines, Interleukin-17, has recently been defined that reveals a distinct ligand-receptor signaling system. There is high evidence for its importance in the regulation of immune responses.

IL-17A was first characterized and six IL-17 family members (IL-17AF) have subsequently been described. IL-17A, a homodimeric cytokine of about 32 kDa, is largely produced by activated memory T lymphocytes, but stimulates innate immunity and host defense. IL-17A and IL-17F both mobilize neutrophils partly through granulopoiesis and CXC chemokine induction, as well as increased survival locally. IL-17A and IL-17F production by T lymphocytes is regulated by IL-23 independent of T cell receptor activation.

The T help 1 (Th1) and Th2 cell classification has until recently provided the framework for understanding CD4(+) T cell biology and the interplay between innate and adaptive immunity. Recent studies have defined a previously unknown arm of the CD4(+) T cell effector response, the Th17 lineage. This subset of T cells produces interleukin 17, which is highly proinflammatory and induces severe autoimmunity. Whereas IL-23 serves to expand previously differentiated T(H)-17 cell populations, IL-6 and transforming growth factor- $\beta$  (TGF  $\beta$ ) induce the differentiation of T(H)-17 cells from naïve precursors.

Increasing evidence shows that IL-17 family members play an active role in inflammatory diseases, autoimmune diseases, and cancer. The IL-17 signaling system is operative in disparate tissues such as articular cartilage, bone, meniscus, brain, hematopoietic tissue, kidney, lung, skin and intestine. Thus, the evolving IL-17 family of ligands and receptors may play an important role in the homeostasis of tissues in health and disease beyond the immune system. Increased levels of IL-17 have been associated with several conditions, including airway inflammation, rheumatoid arthritis, intraperitoneal abscesses and adhesions, inflammatory bowel disease, allograft rejection, psoriasis, cancer and multiple sclerosis.

For literature update contact [drg@drg-diagnostics.de](mailto:drg@drg-diagnostics.de)

## 3 PRINCIPLES OF THE TEST

An anti-human IL-17A coating antibody is adsorbed onto microwells.

Human IL-17A present in the sample or standard binds to antibodies adsorbed to the microwells. A biotin-conjugated anti-human IL-17A antibody is added and binds to human IL-17A captured by the first antibody.

Following incubation unbound biotin-conjugated anti-human IL-17A antibody is removed during a wash step. Streptavidin-HRP is added and binds to the biotin-conjugated anti-human IL-17A antibody.

Following incubation unbound Streptavidin-HRP is removed during a wash step, and substrate solution reactive with HRP is added to the wells.

A colored product is formed in proportion to the amount of human IL-17A present in the sample or standard. The reaction is terminated by addition of acid and absorbance is measured at 450 nm. A standard curve is prepared from 7 human IL-17A standard dilutions and human IL-17A sample concentration determined.

#### 4 REAGENTS PROVIDED

Reagents for 96 tests

- 1 aluminum pouch with a **Microwell Plate** (12 strips of 8 wells each) **coated** with monoclonal antibody to human IL-17A
- 1 vial (70 µL) **Biotin-Conjugate** anti-human IL-17A monoclonal antibody
- 1 vial (150 µL) **Streptavidin-HRP**
- 2 vials human IL-17A **Standard** lyophilized, 200 pg/mL upon reconstitution
- 1 vial **Control high**, lyophilized
- 1 vial **Control low**, lyophilized
- 1 vial (12 mL) **Sample Diluent**
- 1 vial (5 mL) **Assay Buffer Concentrate 20x** (PBS with 1% Tween™ 20, 10% BSA)
- 1 bottle (50 mL) **Wash Buffer Concentrate 20x** (PBS with 1% Tween™ 20)
- 1 vial (15 mL) **Substrate Solution** (tetramethyl-benzidine)
- 1 vial (15 mL) **Stop Solution** (1M Phosphoric acid)

#### 4 Adhesive Films

#### 5 STORAGE INSTRUCTIONS – ELISA KIT

Store kit reagents between 2 °C and 8 °C, except for controls. Store lyophilized controls at -20 °C.

Immediately after use remaining reagents should be returned to cold storage (2 °C to 8 °C), or to -20 °C, respectively.

Expiry of the kit and reagents is stated on labels.

Expiry of the kit components can only be guaranteed if the components are stored properly, and if, in case of repeated use of one component, this reagent is not contaminated by the first handling.

#### 6 SAMPLE COLLECTION AND STORAGE INSTRUCTIONS

Cell culture supernatant, serum, and plasma (citrate, heparin) were tested with this assay. Other biological samples might be suitable for use in the assay.

Remove serum or plasma from the clot or cells as soon as possible after clotting and separation.

Samples containing a visible precipitate must be clarified prior to use in the assay. Do not use grossly hemolyzed or lipemic samples.

Samples should be aliquoted and must be stored frozen at -20 °C to avoid loss of bioactive human IL-17A. If samples are to be run within 24 hours, they may be stored at 2 °C to 8 °C (refer to 13.5 “Sample stability”).

Avoid repeated freeze-thaw cycles. Prior to assay, the frozen sample should be brought to room temperature slowly and mixed gently.

#### 7 MATERIALS REQUIRED BUT NOT PROVIDED

- 5 mL and 10 mL graduated pipettes
- 5 µL to 1000 µL adjustable single channel micropipettes with disposable tips
- 50 µL to 300 µL adjustable multichannel micropipette with disposable tips
- Multichannel micropipette reservoir
- Beakers, flasks, and cylinders necessary for preparation of reagents
- Device for delivery of wash solution (multichannel wash bottle or automatic wash system)
- Microwell strip reader capable of reading at 450 nm (620 nm as optional reference wave length)
- Glass-distilled or deionized water
- Statistical calculator with program to perform regression analysis

## 8 PRECAUTIONS FOR USE

- All chemicals should be considered as potentially hazardous. We therefore recommend that this product is handled only by those persons who have been trained in laboratory techniques and that it is used in accordance with the principles of good laboratory practice. Wear suitable protective clothing such as laboratory overalls, safety glasses and gloves. Care should be taken to avoid contact with skin or eyes. In the case of contact with skin or eyes wash immediately with water. See material safety data sheet(s) and/or safety statement(s) for specific advice.
- Reagents are intended for research use only and are not for use in diagnostic or therapeutic procedures.
- Do not mix or substitute reagents with those from other lots or other sources.
- Do not use kit reagents beyond expiration date on label.
- Do not expose kit reagents to strong light during storage or incubation.
- Do not pipet by mouth.
- Do not eat or smoke in areas where kit reagents or samples are handled.
- Avoid contact of skin or mucous membranes with kit reagents or samples.
- Rubber or disposable latex gloves should be worn while handling kit reagents or samples.
- Avoid contact of substrate solution with oxidizing agents and metal.
- Avoid splashing or generation of aerosols.
- To avoid microbial contamination or cross-contamination of reagents or samples that may invalidate the test, use disposable pipette tips and/or pipettes.
- Use clean, dedicated reagent trays for dispensing the conjugate and substrate reagent.
- Exposure to acid inactivates the conjugate.
- Glass-distilled water or deionized water must be used for reagent preparation.
- Substrate solution must be at room temperature prior to use.
- Decontaminate and dispose samples and all potentially contaminated materials as if they could contain infectious agents. The preferred method of decontamination is autoclaving for a minimum of 1 hour at 121.5 °C.
- Liquid wastes not containing acid and neutralized waste may be mixed with sodium hypochlorite in volumes such that the final mixture contains 1.0% sodium hypochlorite. Allow 30 minutes for effective decontamination. Liquid waste containing acid must be neutralized prior to the addition of sodium hypochlorite.

## 9 PREPARATION OF REAGENTS

Buffer concentrates should be brought to room temperature and should be diluted before starting the test procedure.

If crystals have formed in the Buffer Concentrates, warm them gently until they have completely dissolved.

### 9.1 Wash Buffer (1x)

Pour entire contents (50 mL) of the Wash Buffer Concentrate (20x) into a clean 1000 mL graduated cylinder. Bring to final volume of 1000 mL with glass-distilled or deionized water.

Mix gently to avoid foaming.

Transfer to a clean wash bottle and store at 2 ° to 25 °C. Please note that Wash Buffer (1x) is stable for 30 days.

Wash Buffer (1x) may also be prepared as needed according to the following table:

Number of Strips	Wash Buffer Concentrate (20x) (mL)	Distilled Water (mL)
1 - 6	25	475
1 - 12	50	950

### 9.2 Assay Buffer (1x)

Pour the entire contents (5 mL) of the **Assay Buffer Concentrate** (20x) into a clean 100 mL graduated cylinder. Bring to final volume of 100 mL with distilled water. Mix gently to avoid foaming.

Store at 2° to 8°C. The Assay Buffer (1x) is stable for 30 days.

Assay Buffer (1x) may also be prepared as needed according to the following table:

Number of Strips	Assay Buffer Concentrate (20x) (mL)	Distilled Water (mL)
1 - 6	2.5	47.5
1 - 12	5.0	95.0

### 9.3 Biotin-Conjugate

**Note:** The Biotin-Conjugate should be used within 30 minutes after dilution.

Make a 1:100 dilution of the concentrated **Biotin-Conjugate** solution with Assay Buffer (1x) in a clean plastic tube as needed according to the following table:

Number of Strips	Biotin-Conjugate (mL)	Assay Buffer (1x) (mL)
1 - 6	0.03	2.97
1 - 12	0.06	5.94

### 9.4 Streptavidin-HRP

**Note:** The Streptavidin-HRP should be used within 30 minutes after dilution.

Make a 1:200 dilution of the concentrated Streptavidin-HRP solution with Assay Buffer (1x) in a clean plastic tube as needed according to the following table:

Number of Strips	Streptavidin-HRP (mL)	Assay Buffer (1x) (mL)
1 - 6	0.03	5.97
1 - 12	0.06	11.94

### 9.5 Human IL-17A Standard

1. Reconstitute human IL-17A standard by addition of distilled water.
2. Reconstitution volume is stated on the label of the standard vial. Swirl or mix gently to insure complete and homogeneous solubilization (concentration of reconstituted standard = 200 pg/mL).
3. Allow the standard to reconstitute for 10-30 minutes. Mix well prior to making dilutions.

The standard has to be used immediately after reconstitution and cannot be stored.

#### 9.5.1 External Standard Dilution

1. Label 7 tubes, one for each standard point: S1, S2, S3, S4, S5, S6, S7
2. Prepare 1:2 serial dilutions for the standard curve as follows  
Pipette 225 µL of Sample Diluent into each tube.
3. Pipette 225 µL of reconstituted standard (concentration = 200 pg/mL) into the first tube, labelled S1, and mix (concentration of standard 1 = 100 pg/mL).
4. Pipette 225 µL of this dilution into the second tube, labelled S2, and mix thoroughly before the next transfer.
5. Repeat serial dilutions 5 more times thus creating the points of the standard curve (see Figure 1).

Sample Diluent serves as blank.

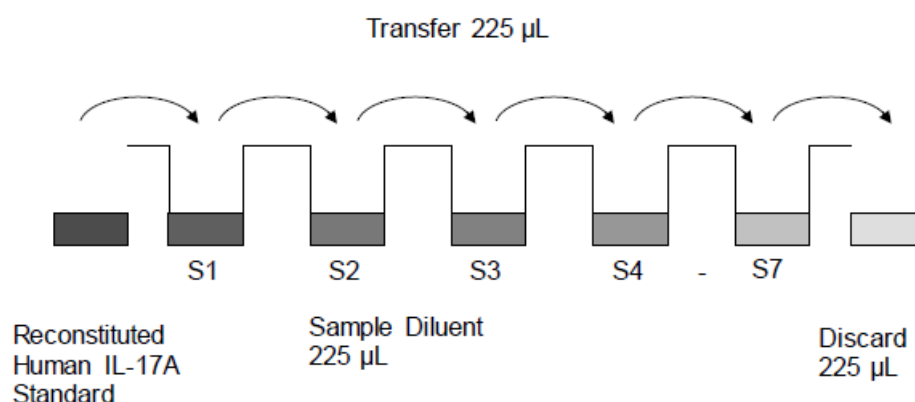


Fig.1 Dilute standards - tubes.

### 9.6 Controls

Reconstitute lyophilized controls by addition of distilled water (10-30 minutes). Reconstitution volume is stated on the label of the control vial. Swirl or mix gently to ensure complete and homogeneous solubilization.

Further treat the controls like your samples in the assay.

For control range please refer to certificate of analysis.

Store reconstituted controls aliquoted at -20 °C. Avoid repeated freeze and thaw cycles.

## 10 TEST PROTOCOL

**Note:** In case of incubation without shaking the obtained O.D. values may be lower than indicated below. Nevertheless the results are still valid.

- Determine the number of microwell strips required to test the desired number of samples plus appropriate number of wells needed for running blanks and standards. Each sample, standard, blank and optional control sample should be assayed in duplicate. Remove extra microwell strips from holder and store in foil bag with the desiccant provided at 2 °C to 8 °C sealed tightly.
- Wash the microwell strips twice with approximately 400 µL Wash Buffer per well with thorough aspiration of microwell contents between washes. Allow the Wash Buffer to sit in the wells for about 10 – 15 seconds before aspiration. Take care not to scratch the surface of the microwells. After the last wash step, empty wells and tap microwell strips on absorbent pad or paper towel to remove excess Wash Buffer. Use the microwell strips immediately after washing. Alternatively microwell strips can be placed upside down on a wet absorbent paper for not longer than 15 minutes. Do not allow wells to dry.
- Standard dilution on the microwell plate** (alternatively, the standard dilution can be prepared in tubes, see “9.5.1 External standard dilution“.):  
Add 100 µL of Sample Diluent in duplicate to all standard wells.  
Pipet 100 µL of prepared standard (see 9.5 “Human IL-17A standard“, concentration = 200.0 pg/mL) in duplicate into well A1 and A2 (see Table 1). Mix the contents of wells A1 and A2 by repeated aspiration and ejection (concentration of standard 1, S1 = 100.0 pg/mL), and transfer 100 µL to wells B1 and B2, respectively (see Figure 2). Take care not to scratch the inner surface of the microwells. Continue this procedure 5 times, creating two rows of human IL-17A standard dilutions ranging from 100.0 to 1.6 pg/mL.  
Discard 100 µL of the contents from the last microwells (G1, G2) used.

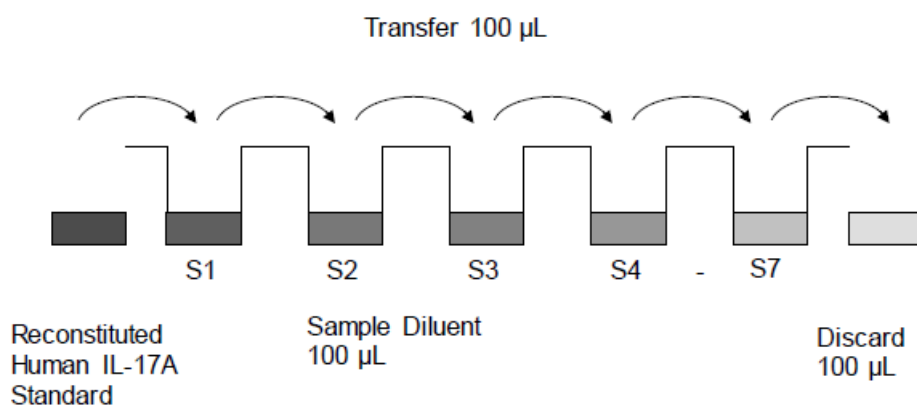


Fig. 2 Dilute standards - microwell plate.

In case of an **external standard dilution** (see 9.5.1 “External standard dilution“), pipet 100 µL of these standard dilutions (S1–S7) in the standard wells according to Table 1.

Table 1  
Example of the arrangement of blanks, standards and samples in the microwell strips.

	1	2	3	4
<b>A</b>	Standard 1 (100.0 pg/mL)	Standard 1 (100.0 pg/mL)	Sample 1	Sample 1
<b>B</b>	Standard 2 (50.0 pg/mL)	Standard 2 (50.0 pg/mL)	Sample 2	Sample 2
<b>C</b>	Standard 3 (25.0 pg/mL)	Standard 3 (25.0 pg/mL)	Sample 3	Sample 3
<b>D</b>	Standard 4 (12.5 pg/mL)	Standard 4 (12.5 pg/mL)	Sample 4	Sample 4
<b>E</b>	Standard 5 (6.3 pg/mL)	Standard 5 (6.3 pg/mL)	Sample 5	Sample 5
<b>F</b>	Standard 6 (3.1 pg/mL)	Standard 6 (3.13 pg/mL)	Sample 6	Sample 6
<b>G</b>	Standard 7 (1.6 pg/mL)	Standard 7 (1.6 pg/mL)	Sample 7	Sample 7
<b>H</b>	Blank	Blank	Sample 8	Sample 8

4. Add 100 µL of Sample Diluent in duplicate to the blank wells.
5. Add 50 µL of Sample Diluent to the sample wells.
6. Add 50 µL of each sample in duplicate to the sample wells.
7. Prepare Biotin-Conjugate (see 9.3 "Biotin-Conjugate").
8. Add 50 µL of Biotin-Conjugate to all wells.
9. Cover with an adhesive film and incubate at room temperature (18 °C to 25 °C) for 2 hours on a microplate shaker.
10. Prepare Streptavidin-HRP (see 9.4 "Streptavidin-HRP").
11. Remove adhesive film and empty wells. Wash microwell strips 4 times according to step 2. Proceed immediately to the next step.
12. Add 100 µL of diluted Streptavidin-HRP to all wells, including the blank wells.
13. Cover with an adhesive film and incubate at room temperature (18 °C to 25 °C) for 1 hour on a microplate shaker.
14. Remove adhesive film and empty wells. Wash microwell strips 4 times according to step 2. Proceed immediately to the next step.
15. Pipet 100 µL of TMB Substrate Solution to all wells.
16. Incubate the microwell strips at room temperature (18 °C to 25 °C) for about 10 minutes. Avoid direct exposure to intense light.

The color development on the plate should be monitored and the substrate reaction stopped (see next step of this protocol) before positive wells are no longer properly recordable. Determination of the ideal time period for color development has to be done individually for each assay.

It is recommended to add the stop solution when the highest standard has developed a dark blue color. Alternatively the color development can be monitored by the ELISA reader at 620 nm. The substrate reaction should be stopped as soon as Standard 1 has reached an OD of 0.9 – 0.95.

17. Stop the enzyme reaction by quickly pipetting 100 µL of Stop Solution into each well. It is important that the Stop Solution is spread quickly and uniformly throughout the microwells to completely inactivate the enzyme. Results must be read immediately after the Stop Solution is added or within one hour if the microwell strips are stored at 2 °C to 8 °C in the dark.
18. Read absorbance of each microwell on a spectro-photometer using 450 nm as the primary wave length (optionally 620 nm as the reference wave length; 610 nm to 650 nm is acceptable). Blank the plate reader according to the manufacturer's instructions by using the blank wells. Determine the absorbance of both the samples and the standards.



## 11 CALCULATION OF RESULTS

- Calculate the average absorbance values for each set of duplicate standards and samples. Duplicates should be within 20% of the mean value.
- Create a standard curve by plotting the mean absorbance for each standard concentration on the ordinate against the human IL-17A concentration on the abscissa. Draw a best fit curve through the points of the graph (a 5-parameter curve fit is recommended).
- To determine the concentration of circulating human IL-17A for each sample, first find the mean absorbance value on the ordinate and extend a horizontal line to the standard curve. At the point of intersection, extend a vertical line to the abscissa and read the corresponding human IL-17A concentration.
- **If instructions in this protocol have been followed, samples have been diluted 1:2 (50  $\mu$ L sample + 50  $\mu$ L Sample Diluent) and the concentration read from the standard curve must be multiplied by the dilution factor (x 2).**
- **Calculation of samples with a concentration exceeding standard 1 may result in incorrect, low human IL-17A levels. Such samples require further external predilution according to expected human IL-17A values with Sample Diluent in order to precisely quantitate the actual human IL-17A level.**
- It is suggested that each testing facility establishes a control sample of known human IL-17A concentration and runs this additional control with each assay. If the values obtained are not within the expected range of the control, the assay results may be invalid.
- A representative standard curve is shown in Figure 3.

**Note:** Do not use this standard curve to derive test results. Each laboratory must prepare a standard curve for each group of microwell strips assayed.

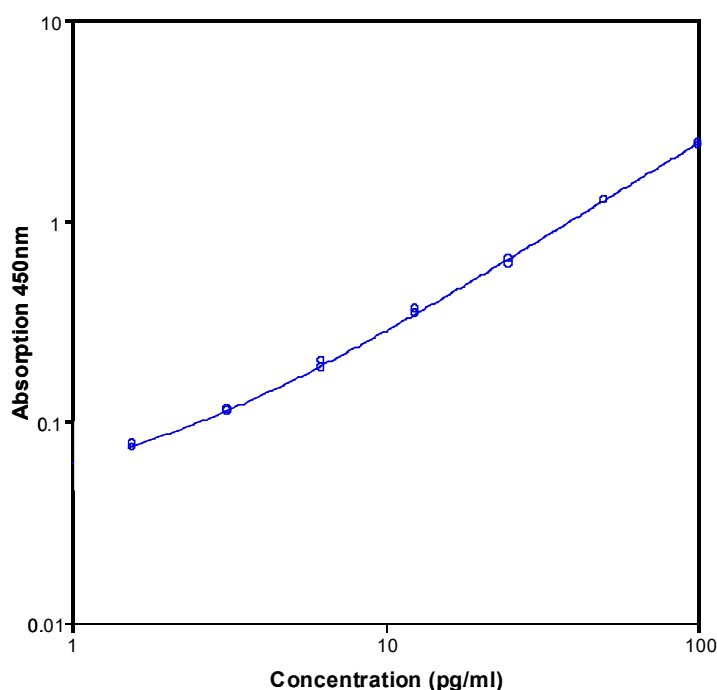


Fig. 3 Representative standard curve for Interleukin-17A (human) ELISA Kit.  
Human IL-17A was diluted in serial 2-fold steps in Sample Diluent.

Table 2

Typical data using the Interleukin-17A (human) ELISA Kit.

Measuring wavelength: 450 nm, Reference wavelength: 620 nm

Standard	Human IL-17A Concentration (pg/mL)	O.D. at 450 nm	Mean O.D. at 450 nm	C.V. (%)
1	100.0	2.362	2.377	2.0
	100.0	2.458		
2	50.0	1.263	1.228	0.1
	50.0	1.260		
3	25.0	0.644	0.594	2.7
	25.0	0.610		
4	12.5	0.364	0.321	2.8
	12.5	0.345		
5	6.3	0.198	0.159	3.6
	6.3	0.185		
6	3.1	0.112	0.080	1.3
	3.1	0.115		
7	1.6	0.074	0.043	2.2
	1.6	0.078		
Blank		0.034	0.035	1.2
		0.035		

The OD values of the standard curve may vary according to the conditions of assay performance (e.g., operator, pipetting technique, washing technique, or temperature effects).

Furthermore, shelf life of the kit may affect enzymatic activity and thus color intensity. Values measured are still valid.

## 12 LIMITATIONS

- Because exact conditions may vary from assay to assay, a standard curve must be established for every run.
- Bacterial or fungal contamination of either screen samples or reagents or cross-contamination between reagents may cause erroneous results.
- Disposable pipette tips, flasks, or glassware are preferred, reusable glassware must be washed and thoroughly rinsed of all detergents before use.
- Improper or insufficient washing at any stage of the procedure will result in either false positive or false negative results. Empty wells completely before dispensing fresh wash solution, fill with Wash Buffer as indicated for each wash cycle, and do not allow wells to sit uncovered or dry for extended periods.
- The use of radioimmunotherapy has significantly increased the number of patients with human anti-mouse IgG antibodies (HAMA). HAMA may interfere with assays utilizing murine monoclonal antibodies leading to both false positive and false negative results. Serum samples containing antibodies to murine immunoglobulins can still be analyzed in such assays when murine immunoglobulins (serum, ascitic fluid, or monoclonal antibodies of irrelevant specificity) are added to the sample.

### 13 PERFORMANCE CHARACTERISTICS

#### 13.1 Sensitivity

The limit of detection of human IL-17A defined as the analyte concentration resulting in an absorbance significantly higher than that of the dilution medium (mean plus 2 standard deviations) was determined to be 0.5 pg/mL (mean of 6 independent assays).

#### 13.2 Reproducibility

##### 13.2.1 Intra-assay

Reproducibility within the assay was evaluated in 3 independent experiments. Each assay was carried out with 6 replicates of 6 serum samples containing different concentrations of human IL-17A. 2 standard curves were run on each plate. Data below show the mean human IL-17A concentration and the coefficient of variation for each sample. The calculated overall intra-assay coefficient of variation was 7.1%.

Table 1

The mean human IL-17A concentration and the coefficient of variation for each sample

Sample	Experiment	Mean Human IL-17A Concentration (pg/mL)	Coefficient of Variation (%)
1	1	59.0	3.9
	2	55.6	4.5
	3	59.6	6.5
2	1	64.2	5.9
	2	53.7	4.9
	3	60.0	6.0
3	1	27.2	3.0
	2	24.0	6.1
	3	27.8	5.2
4	1	29.6	4.7
	2	24.9	11.2
	3	26.6	10.9
5	1	16.6	4.4
	2	14.1	10.3
	3	15.5	11.4
6	1	18.5	6.6
	2	13.3	11.1
	3	14.9	10.7

##### 13.2.2 Inter-assay

Assay to assay reproducibility within one laboratory was evaluated in 3 independent experiments. Each assay was carried out with 6 replicates of 6 serum samples containing different concentrations of human IL-17A. 2 standard curves were run on each plate. Data below show the mean human IL-17A concentration and the coefficient of variation calculated on 18 determinations of each sample. The calculated overall inter-assay coefficient of variation was 9.1%.

Table 2

The mean human IL-17A concentration and the coefficient of variation of each sample

Sample	Mean Human IL-17A Concentration (pg/mL)	Coefficient of Variation (%)
1	58.0	3.7
2	59.3	8.9
3	26.3	7.9
4	27.0	8.8
5	15.4	8.3
6	15.6	17.2

### 13.3 Spike Recovery

The spike recovery was evaluated by spiking 4 levels of human IL-17A into serum, plasma and cell culture supernatant samples. Recoveries were determined in 3 independent experiments with 4 replicates each.

The unspiked samples were used as blank in these experiments.

The overall mean recovery in serum samples was 107.0%, in plasma (heparin) samples 50.8%, in plasma (citrate) 75.5% and in cell culture supernatant samples 113.6%.

### 13.4 Dilution Parallelism

Serum, plasma and cell culture supernatant samples with different levels of human IL-17A were analysed at serial 2-fold dilutions with 4 replicates each.

The recovery in serum samples ranged from 76.9% to 112.3% with an overall recovery of 101.5%.

The overall mean recovery in plasma samples was 107.8% and in cell culture supernatant samples 81.6%.

Table 5

Sample	Dilution	Expected Human IL-17A Concentration (pg/mL)	Observed Human IL-17A Concentration (pg/mL)	Recovery of Expected Human IL-17A Concentration (%)
1	1		47.6	
	2	23.8	24.6	103.4
	4	12.3	12.8	103.7
	8	6.4	5.6	88.3
2	1		42.0	
	2	21.0	22.3	106.0
	4	11.2	12.2	109.1
	8	6.1	5.9	96.2
3	1		9.4	
	2	4.7	5.3	111.2
	4	2.6	2.5	96.6
	8	1.3	1.0	76.9
4	1		63.2	
	2	31.6	35.5	112.3
	4	17.8	19.1	107.5
	8	9.5	10.2	106.4

### 13.5 Sample Stability

#### 13.5.1 Freeze-Thaw Stability

Aliquots of serum samples (spiked) were stored at -20 °C and thawed 5 times, and the human IL-17A levels determined. There was no significant loss of human IL-17A immunoreactivity detected by freezing and thawing.

#### 13.5.2 Storage Stability

Aliquots of serum samples (spiked) were stored at -20 °C, 2 °C to 8 °C, room temperature (RT) and at 37 °C, and the human IL-17A level determined after 24 h. There was no significant loss of human IL-17A immunoreactivity detected under above conditions.

### 13.6 Specificity

The interference of circulating factors of the immune system was evaluated by spiking these proteins at physiologically relevant concentrations into serum. There was no cross reactivity detected.

### 13.7 Expected Values

There were no detectable human IL-17A levels found. Elevated human IL-17A levels depend on the type of immunological disorder.

**14 REAGENT PREPARATION SUMMARY****14.1 Wash Buffer (1x)**

Add Wash Buffer Concentrate 20x (50 mL) to 950 mL distilled water.

Number of Strips	Wash Buffer Concentrate (mL)	Distilled Water (mL)
1 - 6	25	475
1 - 12	50	950

**14.2 Assay Buffer (1x)**

Add Assay Buffer Concentrate 20x (5 mL) to 95 mL distilled water.

Number of Strips	Assay Buffer Concentrate (mL)	Distilled Water (mL)
1 - 6	2.5	47.5
1 - 12	5.0	95.0

**14.3 Biotin-Conjugate**

Make a 1:100 dilution of Biotin-Conjugate in Assay Buffer (1x):

Number of Strips	Biotin-Conjugate (mL)	Assay Buffer (1x) (mL)
1 - 6	0.03	2.97
1 - 12	0.06	5.94

**14.4 Streptavidin-HRP**

Make a 1:200 dilution of Streptavidin-HRP in Assay Buffer (1x):

Number of Strips	Streptavidin-HRP (mL)	Assay Buffer (1x) (mL)
1 - 6	0.03	5.97
1 - 12	0.06	11.94

**14.5 Human IL-17A Standard**

Reconstitute lyophilized human IL-17A standard with distilled water. (Reconstitution volume is stated on the label of the standard vial.)

**14.6 Controls**

Reconstitute lyophilized controls by addition of distilled water (10-30 minutes). Reconstitution volume is stated on the label of the control vial.

## 15 TEST PROTOCOL SUMMARY

**Note:** If instructions in this protocol have been followed, samples have been diluted 1:2 (50 µL sample + 50 µL Sample Diluent) and the concentration read from the standard curve must be multiplied by the dilution factor (x 2).

1. Determine the number of microwell strips required.
2. Wash microwell strips twice with Wash Buffer.
3. Standard dilution on the microwell plate:  
Add 100 µL Sample Diluent, in duplicate, to all standard wells. Pipette 100 µL prepared standard into the first wells and create standard dilutions by transferring 100 µL from well to well. Discard 100 µL from the last wells.

Alternatively external standard dilution in tubes (see 9.51):  
Pipette 100 µL of these standard dilutions in the microwell strips.

4. Add 100 µL Sample Diluent in duplicate, to the blank wells.
5. Add 50 µL Sample Diluent.
6. Add 50 µL sample in duplicate, to designated sample wells.
7. Prepare Biotin-Conjugate.
8. Add 50 µL Biotin-Conjugate to all wells.
9. Cover microwell strips and incubate 2 hours at room temperature (18 °C to 25 °C).
10. Prepare Streptavidin-HRP.
11. Empty and wash microwell strips 4 times with Wash Buffer.
12. Add 100 µL diluted Streptavidin-HRP.
13. Cover microwell strips and incubate 1 hour at room temperature (18 °C to 25 °C).
14. Empty and wash microwell strips 4 times with Wash Buffer.
15. Add 100 µL Substrate Solution to all wells.
16. Incubate the microwell strips for about 10 minutes at room temperature (18 °C to 25 °C).
17. Add 100 µL Stop Solution to all wells.
18. Blank microwell reader and measure colour intensity at 450 nm.

## SYMBOLS USED

Symbol	English	Deutsch	Italiano	Español	Français
	European Conformity	CE-Konformitäts-kennzeichnung	Conformità europea	Conformidad europea	Conformité normes européennes
	Consult instructions for use *	Gebrauchsanweisung beachten *	Consultare le istruzioni per l'uso	Consulte las instrucciones de uso	Consulter les instructions d'utilisation
<b>IVD</b>	<i>In vitro</i> diagnostic medical device *	<i>In-vitro</i> -Diagnostikum *	Dispositivo medico-diagnostico in vitro	Producto sanitario para diagnóstico In vitro	Dispositif médical de diagnostic in vitro
<b>REF</b>	Catalogue number *	Artikelnummer *	Numero di Catalogo	Número de catálogo	Référence de catalogue
<b>LOT</b>	Batch code *	Chargencode *	Codice del lotto	Código de lote	Numéro de lot
	Contains sufficient for <n> tests *	Ausreichend für <n> Prüfungen *	Contenuto sufficiente per "n" saggi	Contenido suficiente para <n> ensayos	Contenu suffisant pour "n" tests
	Temperature limit *	Temperaturbegrenzung *	Temperatura di conservazione	Temperatura de conservacion	Température de conservation
	Use-by date *	Verwendbar bis *	Utilizzare prima del	Estable hasta	Utiliser jusque
	Manufacturer *	Hersteller *	Fabbricante	Fabricante	Fabricant
	Caution *	Achtung *			
<b>RUO</b>	For research use only	Nur für Forschungszwecke	Solo a scopo di ricerca	Sólo para uso en investigación	Seulement dans le cadre de recherches
<i>Distributed by</i>	Distributed by	Vertreiber	Distributore	Distribuidor	Distributeur
<i>Content</i>	Content	Inhalt	Contenuto	Contenido	Contenu
<i>Volume/No.</i>	Volume / No.	Volumen/Anzahl	Volume/Quantità	Volumen/Número	Volume/Quantité